

Prefixes and Suffixes!



What is Prefix and Suffix?

PREFIX A prefix is a set of letters that is added to the **BEGINNING** of a word to change its meaning.

SUFFIX A suffix is a set of letters that is added to the **END** of a word to change its meaning.

What do you see?



Did you know?

That the carrot that we eat is the ***root*** of the plant!!!

..

....

But why are we talking about carrots!??

Because, in the same way the carrot has a root and a stem..

Some words have a root word and a prefix and a suffix as the stem!

These words can be nouns, verbs, or adjectives.

FRIENDLY



UNFRIENDLY



Here, **UN** is a **PREFIX!**

LOVE

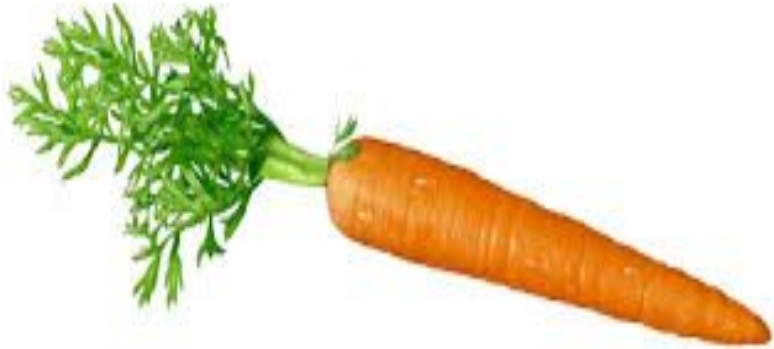


LOV**ABLE**



Here, **ABLE** is a **SUFFIX**!

PREFIXES



ROOT
WORD

ROOT WORD - **FILL**
WITH PREFIX - **REFILL,**
FULFILL

ROOT WORD - **WRITE**
WITH PREFIX - **REWRITE**

ROOT WORD - **PLACE**
WITH PREFIX - **REPLACE**

Prefix	Meaning	Example word
dis-	not, opposite of	dis agree
in-, im-	not	in correct, im possible
mis-	incorrectly	mis understand
re-	again	re do (do again)
un-	not	un interesting
under-	below, lower, not enough	under water



SUFFIXES



ROOT
WORD

ROOT WORD – **PRESENT**
WITH SUFFIX – **PRESENTABLE**

ROOT WORD – **GOVERN**
WITH SUFFIX – **GOVERNMENT**

ROOT WORD – **NATION**
WITH SUFFIX – **NATIONAL**

ADJECTIVE SUFFIXES

Here are more examples with the suffix "**-able**" or "**-ible**" (depending on the root word):

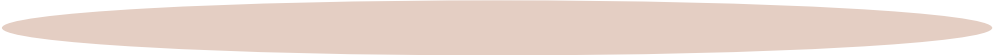
present ----> ***presentable***

comfort ----> ***comfortable***

depend ----> ***dependable***

reach ----> ***reachable***

"-able" is an example of an adjective suffix. Any time you see a word ending in "-able", it is an adjective.



ADJECTIVE SUFFIXES

Suffix	Meaning	Example word
-able, -ible	able to be	suitable
-ful	full of	beautiful
-less	not having, without	toothless



NOUN SUFFIXES

Some suffixes are noun suffixes. *They always make a noun.*

For example, "**-ment**" talks about an "action" or a "process":

enjoy ----> enjoyment

treat ----> treatment

govern ----> government



NOUN SUFFIXES

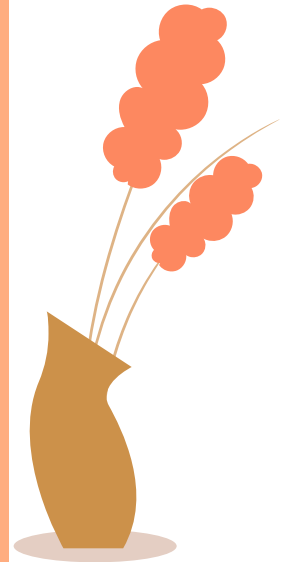
Suffix	Meaning	Example word
-dom	place or state of being	freedom, kingdom
-er	a person who does	worker
-ment	action or process	payment
-ness	state of being	happiness



LET'S PRACTICE PREFIXES!



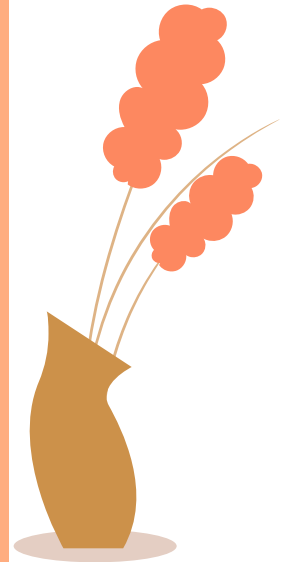
1. I just can't believe it! The story is ____believable!
2. No, that answer is _____correct. It is wrong.
3. Let's look at this information again. We should _____view it before the test.
4. I saw Allison just a moment ago, but now I can't find her! It seems that she _____appeared!
5. Oh, I'm sorry, I didn't hear you correctly. I _____understood you.
6. The subway does not go over the land like a normal train. It moves _____ground.



ANSWERS



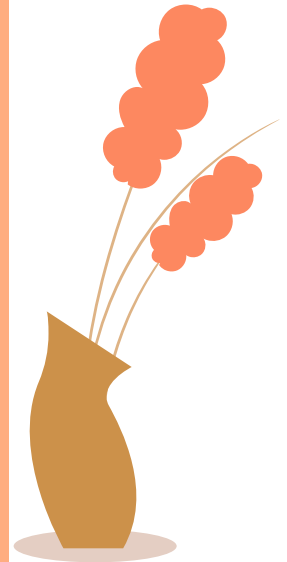
1. I just can't believe it! The story is ***unbelievable!***
2. No, that answer is ***incorrect.*** It is wrong.
3. Let's look at this information again. We should ***review*** it before the test.
4. I saw Allison just a moment ago, but now I can't find her! It seems that she ***disappeared!***
5. Oh, I'm sorry, I didn't hear you correctly. I ***misunderstood*** you.
6. The subway does not go over the land like a normal train. It moves ***underground.***



LET'S PRACTICE ADJECTIVE SUFFIXES!

1. The first woman is very tired. She wants to rest!

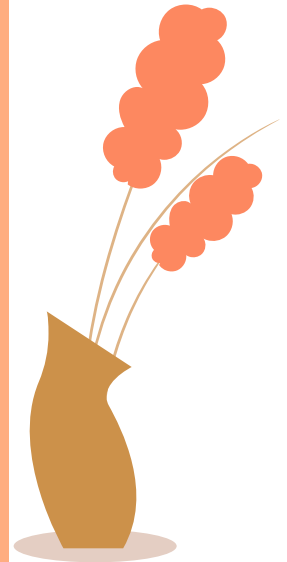
The second woman can't stay still. She always wants to move! She is rest_____.



ANSWER

1. The first woman is very tired. She wants to rest!

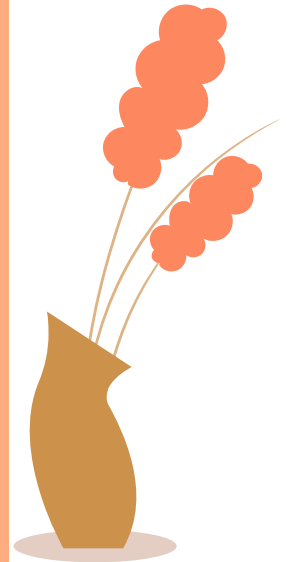
The second woman can't stay still. She always wants to move! She is *restless*.



LET'S PRACTICE ADJECTIVE SUFFIXES!

2. The first dog isn't cute. He's a little scary!

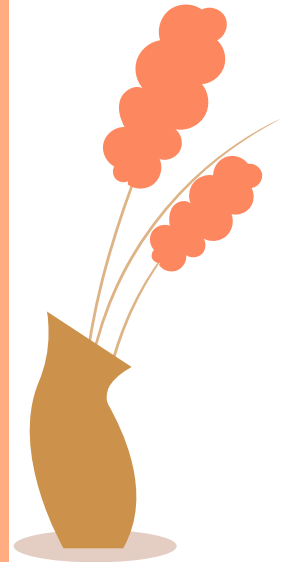
The second dog is very cute! He's ador_____!



ANSWER

2. The first dog isn't cute. He's a little scary!

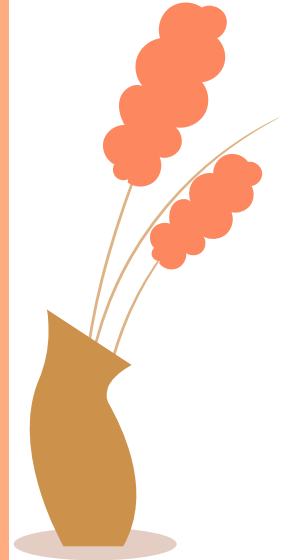
The second dog is very cute! He's ***adorable!***



LET'S PRACTICE ADJECTIVE SUFFIXES!

3. Jason writes lots of lists, so he always remembers what he has to do. He never forgets!

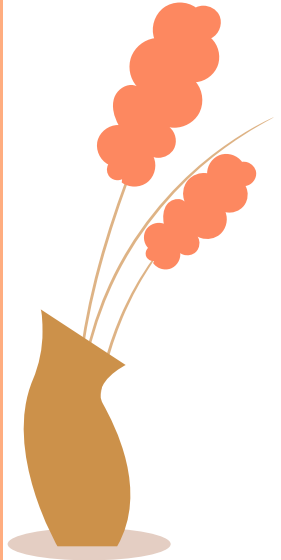
But Melanie can't remember anything! She's very forget_____!



ANSWER

3. Jason writes lots of lists, so he always remembers what he has to do. He never forgets!

But Melanie can't remember anything! She's very *forgetful!*



LET'S PRACTICE PREFIXES!

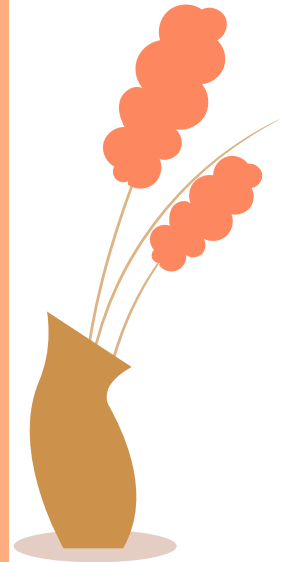


1. I teach science in a big university. I am a physics teach_____.

2. Sir Alan is King Richard's best knight. He is brave and strong. He is the most important knight in Richard's whole king_____!

3. Harshita is my best friend. She is wonderful! The best thing about her is her kind_____. She is always so nice to people!

4. The kids always have fun together. They never disagree or have an argu_____.



ANSWERS

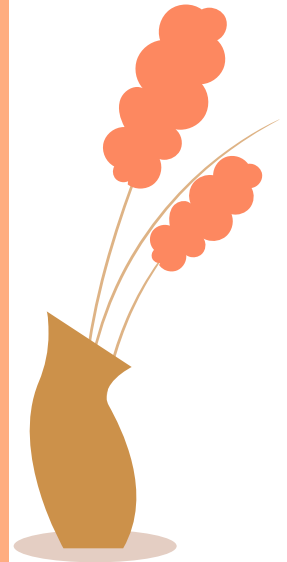


1. I teach science in big a university. I am a physics **teacher**.

2. Sir Alan is King Richard's best knight. He is brave and strong. He is the most important knight in Richard's whole **kingdom**!

3. Henrietta is my best friend. She is wonderful! The best thing about her is her **kindness**. She is always so nice to people!

4. The kids always have fun together. They never disagree or have an **argument**.



**Some words can have a Prefix AND a
Suffix**

**UNCOMFORTABLE
REPLACEMENT
UNSUCCESSFUL
UNLIKABLE
DEACTIVATION**



Prefix

Root word

Suffix

UN

COMFORT

ABLE

RE

PLACE

MENT

UN

SUCCESS

FUL

UN

LIKA

BLE

DE

ACTIVATE

ION



SUMMARIZE

A prefix is a set of letters that is added to the BEGINNING of a word to change its meaning.

PREFIX

We will create a simulation based, task oriented quiz mapped to the context of fluorescent lighting

SUFFIX

PREFIX : dis-, in-, re-, un-, under-

SUFFIX : -able, -full, -less, -ness, -dom, -ment

COMMON WORDS

THANK YOU!

*For any questions, feel free to walk up
to me in the English Department.*

Madhu Sharma

